



Education First

Educational Tours

Watch videos, read
reviews and enroll on your
teacher's Tour Website

eftours.com/

1946682SA

This is also your tour number

HISTORY: HOLOCAUST IN EUROPE

10 or 13 days | Germany | Poland | Czech Republic | Extension includes Austria

OUR MEETING WILL COVER:



Why travel is important



Where we're going



Our travel partner



The safety approach



**What's included and
what's not**



How to reserve your spot

WHY TRAVEL?

- Travel reinforces what you have read, what you have been taught at school and what you know. Travel also adds a visual and experiential dimension to learning, that can not be duplicated in any other way.
- At SFP we believe in justice and compassion. This tour will be reflective of those ideals. We will learn and see things that are not on your typical tourist trip to Europe. In addition, of course, we will see the great sites of these historic European capitals.
- I have been a teacher at SFP for 29 years and have taken students on a variety of trips, including the Soviet Union, Germany/Austria/Switzerland and even recently Washington, DC. Personally, I have visited 48 states, including two cross country trips. I have lots of experience with student travel and genuinely enjoy it.



“My tour was an absolutely life-changing experience and inspired me to continue to travel the world.”

— Alivia L., Student

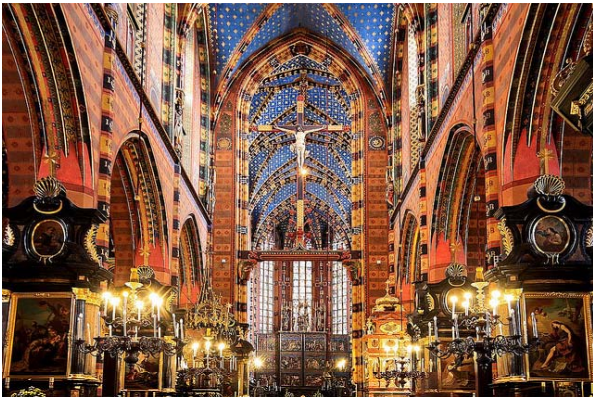
TOUR HIGHLIGHTS

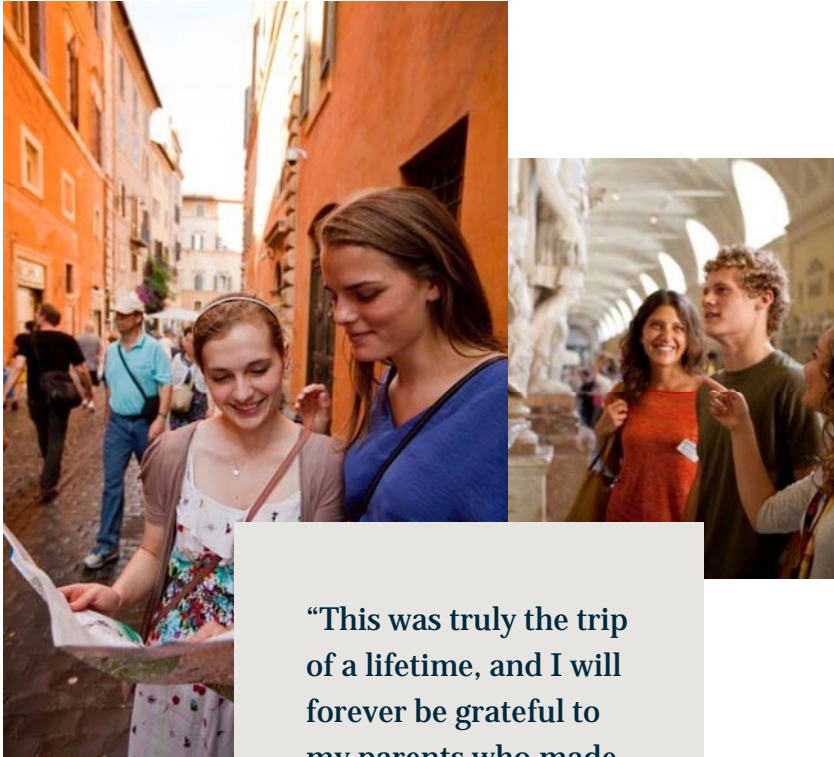
- Guided tour of Berlin, Germany
 - Including Checkpoint Charlie
 - Brandenburg Gate
 - Topography of Terror
- Travel to Warsaw, Poland
 - Walking Tour of the City
 - Warsaw Ghetto



MORE TOUR HIGHLIGHTS

- Travel to Krakow and the site of Schindler's List
 - Take a guided tour of Auschwitz and Birkenau
- Travel to Prague
 - Take a walking tour
- Munich and the Eagle's Nest





“This was truly the trip of a lifetime, and I will forever be grateful to my parents who made it possible.”

— Jessica S., Student

A MORE ENGAGING LEARNING EXPERIENCE

- Bring classroom subjects, people and places to vivid life.
- Develop new perspectives that will give students an edge on their college applications (and in the college lecture hall).
- Spark a lifelong ability to take on any new experience with confidence.

WHY EF?

- 50 years of experience
- Global and local presence
 - Over 500 schools and offices in over 53 countries
- Educational value
 - Accredited, just like our school
- Incredible travel experiences at the guaranteed lowest price
- Personal experience with EF. I ran a successful tour to the Soviet Union with EF.



“My department has been traveling with EF for over 20 years!”

— Heather V., Group Leader

EF'S COMMITMENT TO OUR SAFETY

- 24/7 Tour Director
- Chaperones
- 24-Hour emergency on-call service
- “Peace of Mind” policy
- My approach to safety is simple:
 - Watch the students as if they were my own children
 - Give them simple, clear guidelines to follow
 - Constantly count heads
 - Nightly check-in policy





“Couldn't have asked for a better senior trip! Our tour guide, Andrés, was very kind and worked so hard to make everything perfect.”

— Lynsey M., Student



WHY GROUP TRAVEL?

—
*Group travel keeps tours affordable,
allowing more students to see the world*

- Combined groups get the best value.
- Tour choice and departure date flexibility to match with other groups.
- Meet other students from around the country.
- Our departure date window is:
6/22/18 – 6/30/18



THE GLOBAL TRAVEL PROTECTION PLAN COVERS:

- Tour cancellation and interruption
- Illness and accident
- Baggage and property
- Flight delay
- 24-hour access to an English-speaking representative
- (This is basically trip insurance)

WESHARE ENHANCES EVERY TOUR

weShare is EF's online platform that takes every tour to a deeper, more engaging level

- **Before tour** students research destination-related topics that they feel passionate about.
- **On tour** students continue to explore these topics and engage in more in-depth learning.
- **After tour** students reflect through a creative project. This project may be eligible for high school or college credit—and is a great asset for college applications.



“My daughter toured France and Italy. It sparked a worldview beyond the classroom. The journey is just beginning!”

—Carol B., Parent



WHAT ARE YOU RESPONSIBLE FOR?

—
These are all necessities each traveler will be responsible for.

Spending Money

For additional tour experiences, free time activities, souvenirs, beverages, lunches and snacks (\$30–\$65 per day)

Tips

For your Tour Director, bus driver and local guides (around \$10 per day)

Passport and/or visa fees

Airport baggage fees

PASSPORTS AND VISAS

—
All travelers are responsible for securing necessary documentation

Passports

Valid passports are required for all travelers. Passports may take up to 14 weeks to process.

***Important Note:** Passports must be valid for at least six months after our return date.*

Visas

Non-U.S. citizens may require special visas or other travel documents.



EVERYTHING YOU GET

Program price includes:



Round-trip flights on major carriers



Hotels with private bathrooms



Breakfast and dinner daily



Comfortable motorcoach



Global Travel Protection Plan



Full-time, bilingual Tour Director



Educational itinerary



Sightseeing led by licensed local guides



Entrance fees to select attractions



weShare, EF's online platform for a deeper learning experience

PAYING FOR YOUR TOUR

EF Price Guarantee—your guaranteed lowest price will never change once you enroll

These prices are subject to change
Check the tour website for the latest

Holocaust in Europe

Program Price* ¹ \$3,915

Includes:

- Round-trip airfare and on tour transportation
- Hotels with private bathrooms
- Breakfast and dinner (see your itinerary for meal details)
- Full-time Tour Director
- Daily activities, tours and entrances to attractions
- 3-day extension in Nuremberg and Munich

Weekend Supplement \$35

Global Travel Protection \$155

Early Enrollment Discount ~~-\$100~~

EF's Peace of Mind Program * Free

Total for Students (under 20) \$4115

14 monthly payments \$503/mo

Adult Supplement ² \$650

Total for Adults \$4765

14 monthly payments \$584/mo



You pay:

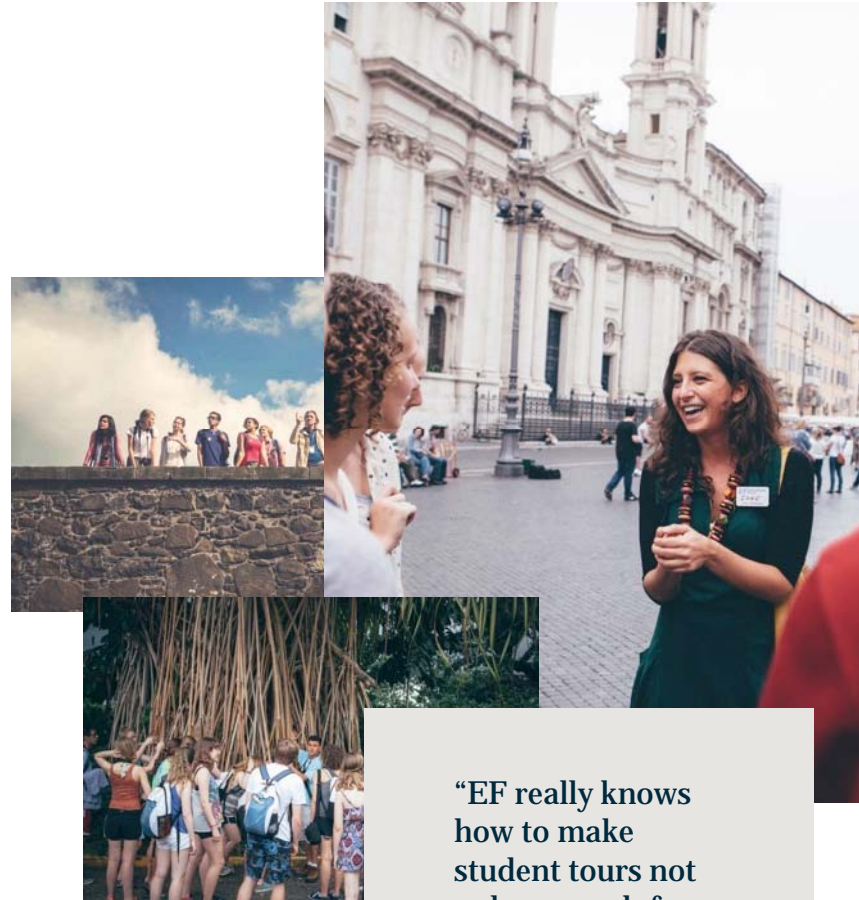
\$280 a month



PAYMENT OPTIONS

- * Automatic Payment Plan — No Interest
 - \$95 deposit at enrollment
 - Choose day payment is withdrawn
- Pay in Full at Enrollment
- Manual Payment Plan—\$50 Plan Fee
- Call Customer Service to choose your perfect plan: 800-665-5364

**Most popular*



“EF really knows how to make student tours not only so much fun, but really educational.”

— Andrea X., Group Leader

FUNDRAISING: DONATION PAGE

(available after you register)

Share your Donation Page – Send the link to whoever you'd like via email / Facebook / Twitter etc.

In this section...

- ▶ Payment details
- ▶ Tour details
- ▶ **Your donation page**
- ▶ Manage your tour
- ▶ Prepare for departure
- ▶ Forms and resources

YOUR LOCATION

Name:

Account Number:

Tour Number:

Status:

Group Leader:

Individual Requested Travel Dates:

Group Requested Travel Dates:

Tour Length:

Departing in:

Departure Gateway:

Current account balance:

Monthly payment plan:
Your plan is active

[Learn more](#)

All-Inclusive Coverage:
You are covered.

Your donations

Goal:

Needed:

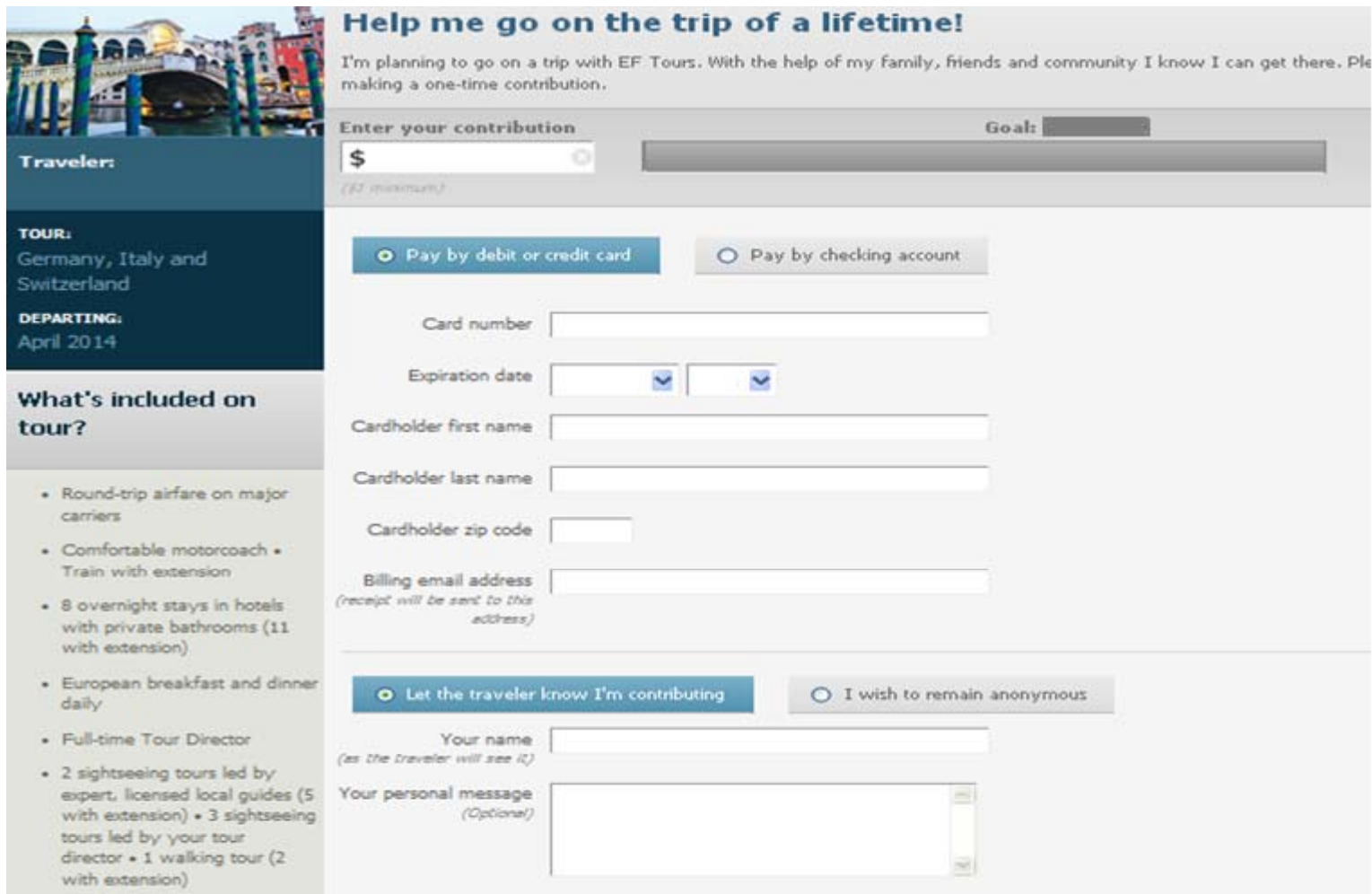
Raise money for your tour! Just share the link below with family, friends and potential sponsors. They can make easy, secure online donations that go directly to help pay for your tour. Use the link in email, Facebook, Twitter, etc. Be sure to include a personal message about why you want to go on the trip and how their donation will help.

Share your donation page

[Preview your page](#)

FUNDRAISING: DONATION PAGE

What does my donation page look like?



Help me go on the trip of a lifetime!
I'm planning to go on a trip with EF Tours. With the help of my family, friends and community I know I can get there. Please making a one-time contribution.

Traveler: [Image of a bridge over a canal]

TOUR:
Germany, Italy and Switzerland

DEPARTING:
April 2014

What's included on tour?

- Round-trip airfare on major carriers
- Comfortable motorcoach • Train with extension
- 8 overnight stays in hotels with private bathrooms (11 with extension)
- European breakfast and dinner daily
- Full-time Tour Director
- 2 sightseeing tours led by expert, licensed local guides (5 with extension) • 3 sightseeing tours led by your tour director • 1 walking tour (2 with extension)

Enter your contribution Goal: [Progress Bar]

\$ [Input] (€ maximum)

Pay by debit or credit card Pay by checking account

Card number [Input]

Expiration date [Dropdown] [Dropdown]

Cardholder first name [Input]

Cardholder last name [Input]

Cardholder zip code [Input]

Billing email address [Input] (receipt will be sent to this address)

Let the traveler know I'm contributing I wish to remain anonymous

Your name [Input] (as the traveler will see it)

Your personal message [Text Area] (Optional)

WHO'S IN?

Risk free enrollment for 48 hours!

Online:

www.eftours.com/1946682SA

Phone: 800-665-5364

Tour Number

1946682SA

Enrollment window opens

Tonight

Enrollment window is open until:

Friday, March 24th

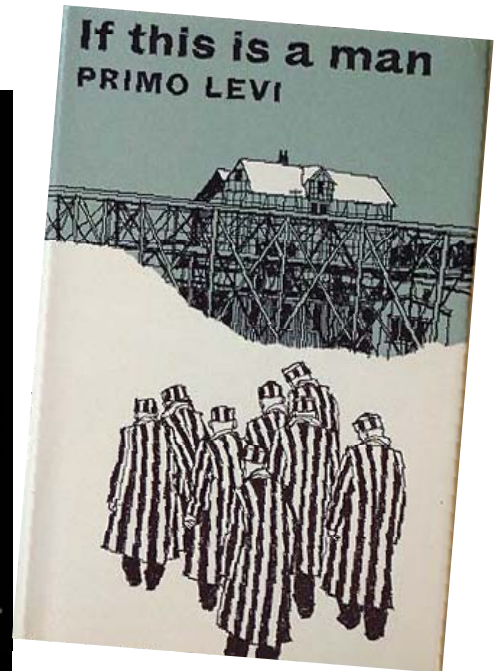
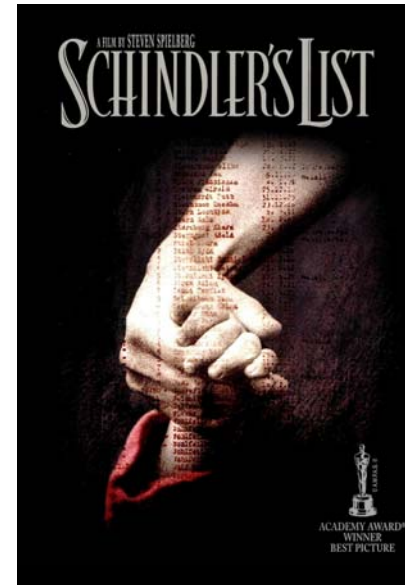


**“It’s the best gift a
parent can give to
their child.”**

**—Barbara B., Group
Leader**



Suggested Research before the Tour



For Warsaw: *The Pianist*

For Krakow: *Schindler's List*

For Prague: *Anthropoid*

If This a Man, by Primo Levi